

## CLUB SAILING at Loch of Skene and at Stonehaven

Organising authority  
**ABERDEEN & STONEHAVEN YACHT CLUB**

### Notice of Race (NoR) Amended January 2026

The notation '[NP]' in a rule means that a boat may not protest another boat for breaking that rule. This changes RRS 60.1(a). The notation '[DP]' in a rule of the NOR or SI means that the penalty for breaching the rule is at the discretion of the protest committee and may be less than disqualification.

#### **1 RULES**

- 1.1 The event is governed by the rules as defined in *The Racing Rules of Sailing (RRS)*.
- 1.2 The prescriptions of the RYA apply. These can be downloaded from the RYA webpage <https://www.rya.org.uk/racing/rules>

#### **2 SAILING INSTRUCTIONS**

- 2.1 The sailing instructions will be published on the club website [www.asyc.org.uk](http://www.asyc.org.uk)

#### **3 COMMUNICATION**

- 3.1 Prior to the date of a race, notices may be given by e-mail sent to known and expected competitors and will be deemed to be a notice on the official notice board. A notice of cancellation on the day of the race may also be sent by e-mail
- 3.2 On the date of a race, the official notice board is in the Clubroom when racing at Loch of Skene and in the foyer of the Clubhouse when racing at Stonehaven

#### **4 ELIGIBILITY AND ENTRY**

- 4.1 The event is open to ASYC club members sailing dinghies that have a current Portsmouth Yardstick handicap.
- 4.2 The Portsmouth Yardstick rating system applies to all boats racing.
- 4.3 Entry is on the day by signing on to the Sign-On Sheet no later than 30minutes before the first race of that day is scheduled to start. The Sign-On Sheet is located in the Clubroom when racing at Loch of Skene and in the foyer of the Clubhouse when racing at Stonehaven.

At his or her sole discretion the Officer of the Day (OOD) may accept later signing on onshore, or by hailing the OOD prior to a race offshore.

- 4.4 Where a competitor opts to sail a different class of boat in a particular series of races it shall be deemed to be

another entry for scoring purposes. The organising authority may make exception for boats with an option of rigs, where the lower of the PY numbers during the series shall be used for all races.

## **5 SCHEDULE**

- 5.1** The schedule of series, trophy events, and races within such series and events can be found in the ASYC calendar on DutyMan at <https://dutyman.biz/dmmain.aspx?id=A0002180>
- 5.2** An alternative date for a race or event may be included in the schedule. If racing is changed to the alternative date, notice of the change will be given by 10am on the day prior to the earlier of the scheduled date and the alternative date.
- 5.3** Club series racing is Handicap fleet racing only. Trophy events will be Handicap fleet racing unless otherwise notified in advance.
- 5.4** At the discretion of the OOD, single class starts may be permitted. but these will not count towards the series results.
- 5.5** A race may comprise of more than one start with finish times adjusted as though all boats had started at the same time e.g. if the Handicap fleet is split into:
- (a) a fast handicap fleet and a slow handicap fleet, or
  - (b) a main start and then a subsequent start for less experienced sailors
- 5.6** Three or more Helms intending to start a race, in the opinion of the OOD on the day, constitute a race.

## **6 CLOTHING AND EQUIPMENT**

- 6.1** Rule 40.1 applies (ie. personal flotation devices must be worn)

## **7 VENUE**

- 7.1** Venue is the Loch of Skene until the end of May, and Stonehaven Bay thereafter. Exact dates for the change of venue may be found in the schedule of races.
- 7.2** If, exceptionally, the venue has to be changed, notice of the change will be given to club members no less than one week in advance

## **8 COURSES**

- 8.1** The courses and marks will be indicated on a course board on the OOD boat, or if there is no course board otherwise communicated to competitors. It is the responsibility of each competitor to ensure that they know the course prior to the race start.

## **9 PENALTY SYSTEM**

- 9.1** Where a Discretionary Penalty is applied, RYA guidance at <https://www.rya.org.uk/racing/running-racing/guidance-good-practice/discretionary-penalties> will be used as guidance by the protest committee deciding the penalty.

## **10 SCORING**

- 10.1** The RRS Appendix A scoring system applies
- 10.2** (a) In each series, after four races have been sailed one race may be discarded, after five races have been sailed two races may be discarded and thereafter 50% of the scheduled races (rounded down) may be discarded

(b) Discards for Trophy events will be zero unless otherwise advised by notice prior to the start of the event.

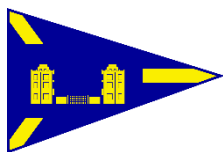
- 10.3** A competitor in a series will receive average points for any race when they are providing race support on a scheduled duty. The number of such races with average points for any competitor may not exceed the lesser of a) number of races in the series where they finished and recorded a result or b) the number of races on three race days. The average will be calculated excluding DNC scores up to the maximum discards allowed and any scores that are themselves average scores (redress option2 / RDG2 in HALSail). If the competitor sails more than one boat in the series, the average points will be applied to their best performing boat. Average points will be applied at the closing of each series, before final results for the series are issued.

## **11 CHARTERED OR LOANED BOATS**

- 11.1** A chartered ASYC club boat may carry national letters, other identifying marks or a sail number in contravention of her class rules This changes the requirements of RRS Appendix G 1.2, G 1.3 and complies with G3.

## **12 RISK STATEMENT**

- 12.1** RRS 3 states: 'The responsibility for a boat's decision to participate in a race or to continue to race is hers alone.' By participating in this event each competitor agrees and acknowledges that sailing is a potentially dangerous activity with inherent risks. These risks include strong winds and rough seas, sudden changes in weather, failure of equipment, boat handling errors, poor seamanship by other boats, loss of balance on an unstable platform and fatigue resulting in increased risk of injury. **Inherent in the sport of sailing is the risk of permanent, catastrophic injury or death by drowning, trauma, hypothermia or other causes.**
- 12.2** By taking part in the event, each competitor and, where applicable, their responsible adult agrees and acknowledges that:
- a) They are aware of the inherent element of risk involved in the sport and accept responsibility for the exposure of themselves, their crew and their boat to such inherent risk whilst taking part in the event;
  - b) They are responsible for the safety of themselves, their crew, their boat and their other property whether afloat or ashore;
  - c) They accept responsibility for any injury, damage or loss to the extent caused by their own actions or omission;
  - d) Their boat is in good order, equipped to sail in the event and they are fit to participate;
  - e) The provision of a race management team, patrol boats and other officials and volunteers by the event organizer does not relieve them of their own responsibilities;
  - f) The provision of patrol boat cover is limited to such assistance, particularly in extreme weather conditions, as can be practically provided in the circumstances;
  - g) It is their responsibility to familiarize themselves with any risks specific to this venue or this event drawn to their attention in any rules and information produced for the event and to attend any safety briefing held for this event
- 12.3** The establishment of this Notice of Race and the Sailing Instructions in no way reduces the complete responsibility of the owner / competitor for his or her boat and the management thereof. The race organisers shall not be liable for any loss, damage, death or personal injury howsoever caused to the owner / competitor, or to his or her skipper or crew as a result of their taking part in any race.
- ## **13 INSURANCE**
- 13.1** Each participating boat shall be insured with valid third-party liability insurance with a minimum cover of £2million per incident.
- ## **14 PRIZES**
- 14.1** Prizes for each series or Trophy event are at the discretion of the ASYC Committee and will be awarded at a prizegiving after the end of the season



## CLUB SAILING at Loch of Skene and at Stonehaven

Organising authority  
**ABERDEEN & STONEHAVEN YACHT CLUB**

### Sailing Instructions (SIs)

For all ASYC Events excluding Regattas open to non-members

#### 1 Changes to Sailing Instructions

- 1.1 Any changes to the Sailing Instructions will be posted on the Official Notice Board at least 30 minutes before the advertised start of the race, except that any change to the schedule of races will be posted by 10:00hrs on the day before it will take effect.

#### 2 Signals Made Ashore

- 2.1 No signals are made ashore

#### 3 Class Flags

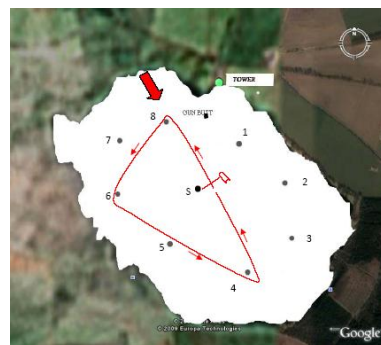
- 3.1 Q Flag is used for the Handicap fleet
- 3.2 At the OOD's discretion the fleet may be split into fast and slow handicap fleets in which case Q flag will be used for the fast handicap fleet and the OOD will notify in advance the flag to be used for the slow handicap fleet
- 3.3 If there are individual class starts the OOD will notify in advance the flag to be used for each class

#### 4 Racing Area

- 4.1 Course Areas:
  - Loch of Skene as per figure
  - Stonehaven Bay as per figure
- 4.2 Courses will be displayed on the course board on the Committee Boat
- 4.3 The number of rounds will not be displayed.

#### 5 Marks

- 5.1 Marks that may be used:
  - Skene marks numbered 1 to 8.
  - Stonehaven marks are yellow pillar marks or flag marks.
  - Other temporary marks may be laid at the OOD's discretion.
- 5.2 The outer limit mark (S on the diagrams) is laid by the OOD and forms one end of the start line
- 5.3 These or other marks may be laid in different positions at the OOD's discretion provided they are adequately described on the Course Board



## 6 The Start

### 6.1 Start sequence timing.

- All racing will use the following start sequence (This changes RRS 26):

Time	Timer	Action 1	Action 2
3 minutes before start	-3 min	Raise Q Flag (Yellow)	1 sound signal
2 minutes before start	-2 min	Raise P flag (Preparatory Flag; Blue with White square in centre flag)	1 sound signal
1 minute before start	-1 min	Lower P flag	1 sound signal
Start	0	Lower Q Flag	1 sound signal

- Alternatively, the OOD may use a three-baton system to indicate the minutes (This changes RRS 26).
- Times shall be taken from visual signals; the absence of a sound signal shall be disregarded.
- If there are more than one start, the sequence above will apply to each start but using the appropriate fleet or class flag in place of the Q flag

### 6.2 The start line will be between the console on the Committee Boat and the outer limit marker 'S'.

### 6.3 Individual Recalls

- Individual Recalls will be in accordance with RRS 29.1

### 6.4 General Recalls

- General Recalls will be in accordance with RRS 29.2

## 7 Finishing

### 7.1 The Finish Line will be between the console on the Committee Boat and the outer limit marker 'S'.

### 7.2 Finishing Signals:

- When the first boat is on the last leg, approaching the finish line, Flag S will be raised and two sound signals given.

### 7.3 Partially Completed Races

- If conditions dictate, the race committee may, at their discretion, take the results of a race from the times recorded on a previous round.

## 8 Time Limits

### 8.1 The time limit will be 90 minutes. Boats failing to finish within 30 minutes after the first boat finishes or within the time limit whichever is the earlier will be scored 'Did Not Finish' (DNF). This changes RRS 35.

## 9 Protests

### 9.1 Protests shall be written on forms available from the Race Officer or the OOD and handed to the OOD within 60 Minutes after the time the last boat in her race finished (or group of races if they are sailed back-to-back).